

# Privileged Identity Management

**Take Control of Your Administrative Credentials**

**Philip Lieberman, President & CEO**

**phil@liebsoft.com**

www.liebsoft.com  
sales@liebsoft.com  
310-550-8575  
800-829-6263



# About Lieberman Software

- **Founded in 1978, 1994 as an ISV**
- **Pioneers of Privileged Password Management**
- **1200+ Enterprise Customers in all verticals**
- **Strong presence in Government and National Defense**
- **Followed by Gartner, Forrester, 451 Group**
- **US-based, management-owned and profitable**
- **Technology integrations include:**



# Privileged Accounts

*Everywhere in the Enterprise and Cloud*

## VM Environments

- Hypervisors
- Library-based VM images

## Physical Servers & Desktops

- Administrator, Domain/Local
- Root, Super user, Admin, ...

## Devices

- Routers, Switches, Gateways
- Light-Out Management Cards, Embedded Systems, ...

## Databases (DBA + Apps)

- SA, Sysadmin
- SYS, ...

## Middleware

- Microsoft IIS, JAAS
- IBM WebSphere, Oracle WebLogic

## Applications

- Setup, Admin, App Local
- Web Service Accounts, ...



# Are You At Risk?

**Do you know where  
all your privileged  
accounts are?**

**Do passwords change?  
Are vendor supplied  
default passwords in  
use?**

**Who is sharing  
credentials?  
Are they accountable?**

**Will your passwords  
withstand dictionary  
attacks?**

**Does lack of automation make it  
impractical to comply with policies?**

# Positive Control of Privileged Accounts Is a Regulatory / Audit Requirement

<p><b>Document that You Have Measures In Place To...</b></p>	<p><b>FISMA</b> NIST Special Publication 800-53 R. 3 Defense Contractors, Information Processors</p>	<p><b>HIPAA</b> Providers, Insurance Plans, Employers, Health Care Clearinghouses</p>	<p><b>NERC</b> Transmission Service Providers / Owners / Operators, Generation Owners / Operators, Load Serving Entities, ...</p>	<p><b>PCI-DSS</b> Entities that store, process, or transmit credit card data</p>	<p><b>US NRC</b> Regulatory Guide 5.71 Operators, Vendors, Contractors</p>
<p><b>Identify</b> and track the location of privileged account credentials</p>	<p>AC-2 AC-4</p>		<p>B.R5.1. (Implicit)</p>	<p>7.2.1</p>	<p>Appendix A, B.1.2 Appendix A, B.1.3 Appendix A, B.1.4</p>
<p><b>Enforce</b> rules for password strength, uniqueness, change frequency</p>	<p>AC-2</p>	<p>45§164.308(5)(D) 45§164.312(2)(i)</p>	<p>B.R5.3.1. B.R5.3.2. B.R5.3.3.</p>	<p>8.5.5 8.5.8 8.5.9</p>	<p>Appendix A, B.1.2</p>
<p><b>Delegate</b> so that only appropriate personnel can access</p>	<p>AC-3 AC-6</p>	<p>45§164.308(3)(i) 45§164.308(3)(B) 45§164.308(3)(C) 45§164.312(a)(1)</p>	<p>B.R5.1. B.R5.2. B.R5.2.1. B.R5.2.3.</p>	<p>2.1 6.3.6 7.7.1 8.5.4 8.5.6</p>	<p>Appendix A, B.1.2 Appendix A, B.1.3 Appendix A, B.1.5 Appendix A, B.1.6</p>
<p><b>Audit</b> and alert to show requesters, access history, purpose, duration, etc.</p>	<p>AU-3 AU-9</p>	<p>45§164.308(5)(C)</p>	<p>B.R5.1.2.</p>	<p>10.2</p>	<p>Appendix A, B.1.2 Appendix A, B.1.3</p>

# How We Solve The Problem

**Mitigate Risks Through Automation**



# Enterprise Random Password Manager

## *How It Works*

- Automatic discovery of systems and devices
- Retrieve identities stored within, find identity usage of middleware and operating system objects
- Randomize credentials, encrypt them and store in a secure repository
- Propagate new credentials to all places they are used
- Enforce secure authentication, authorization and workflows to retrieve credentials, one at a time
- Change passwords and where they are used automatically after disclosure/usage
- Audit all transactions

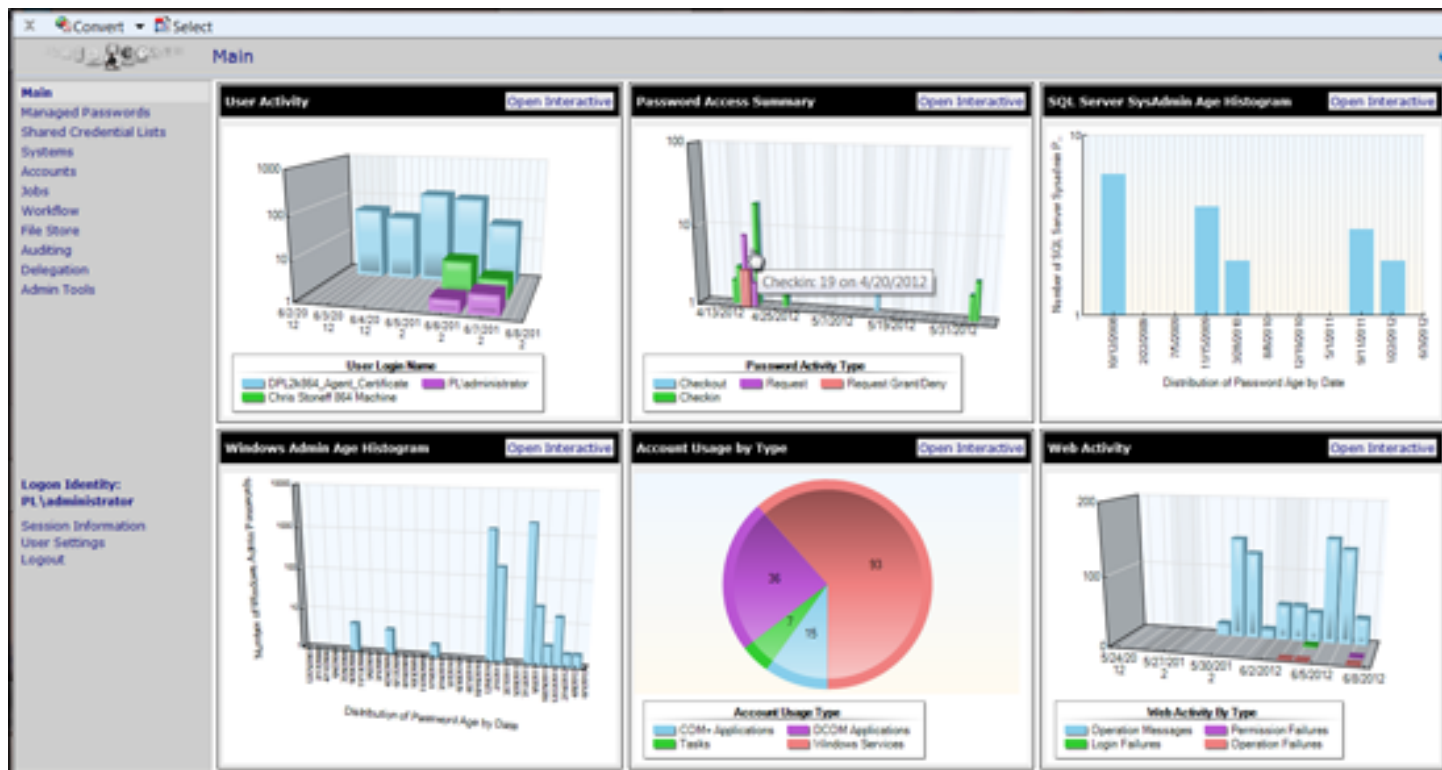


# Results

- **No shared credentials**
- **Every managed credential is unique**
- **Minimal disclosure of access credentials**
- **Immediate access to credentials on a need to know basis for the shortest time possible**
- **Automatic discovery of new credentials and usage**
- **Works at scale with large numbers of systems and users**
- **Regular password changes do not cause outages - no incomplete or inaccurate processes**



# Analytics to Measure Security Coverage & Forensic Analysis



Pinpoint events and trends you'd never detect in logs



# What Differentiates Our Solution?

- **Rapid, complete deployments: in days, not months**
- **Minimal professional services required**
- **Superior auto-discovery, correlation, propagation and visualization**
- **Enterprise-ready for scale, scope, and complex, dynamic infrastructures**
- **Comprehensive, open documentation**
- **Open standards**



# Visit Us at Black Hat USA 2012!

*Booth # 241*

- **Enjoy some magic**
- **Join an interactive demo**
- **Talk to a representative**
- **Attend a presentation – you could win \$50!**
- **Enter to win a Parrot AR.Drone 2.0 Quadricopter**

